

ACT I SCENE 1: ORLANDO

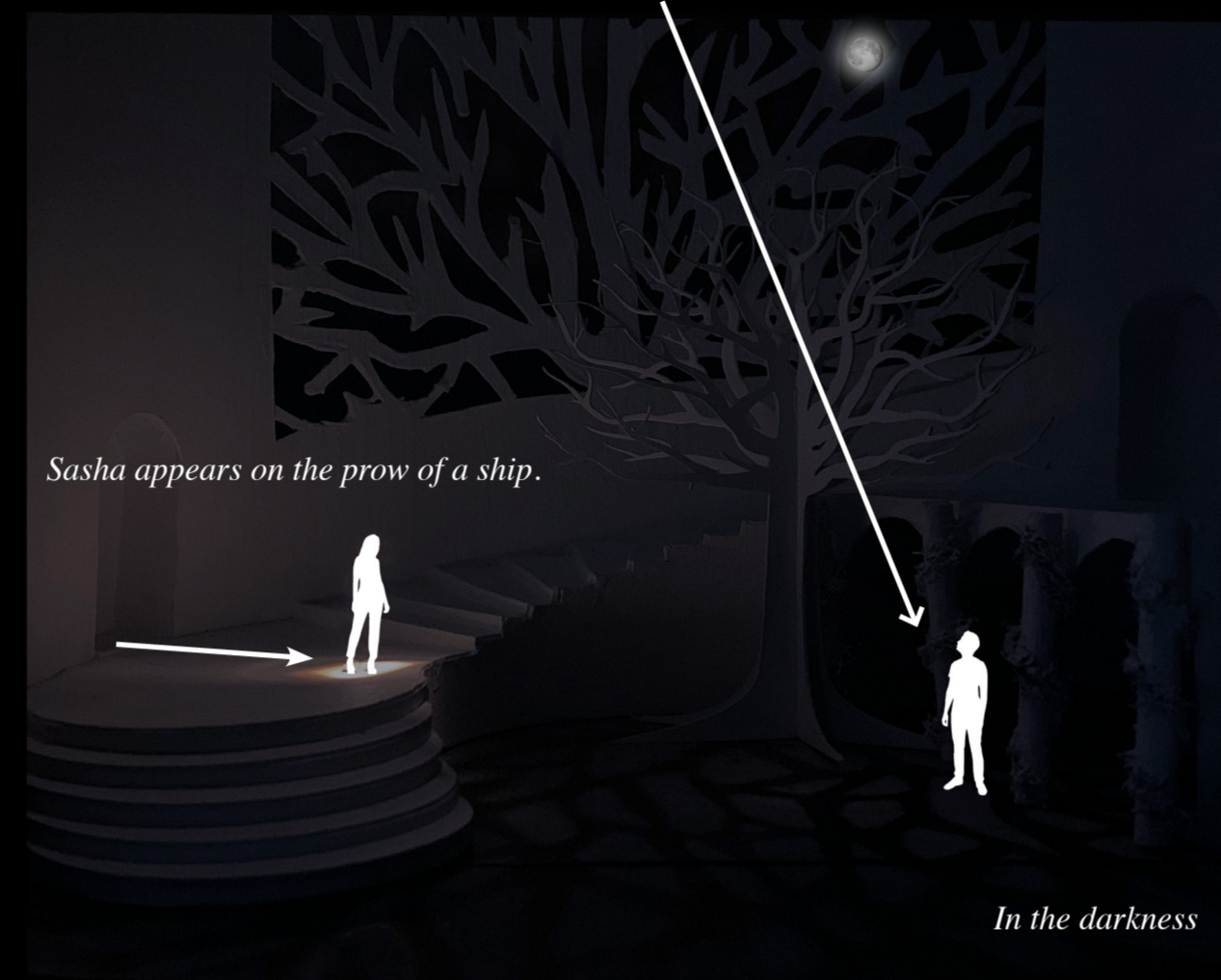
Orlando flings himself down in front of an oak tree.



This scene expresses Orlando's love of nature and his inspiration for the poem that he begins with: "The greeny greeny green of the grass". The chair is a prop that is moved on and off stage by members of the Chorus. Lighting in this scene emanates nature and a forest that is full of life. Warm lighting from above is cast at an angle to replicate sunlight and create a familiar and comforting mood.

ACT I SCENE 8: THE ESCAPE

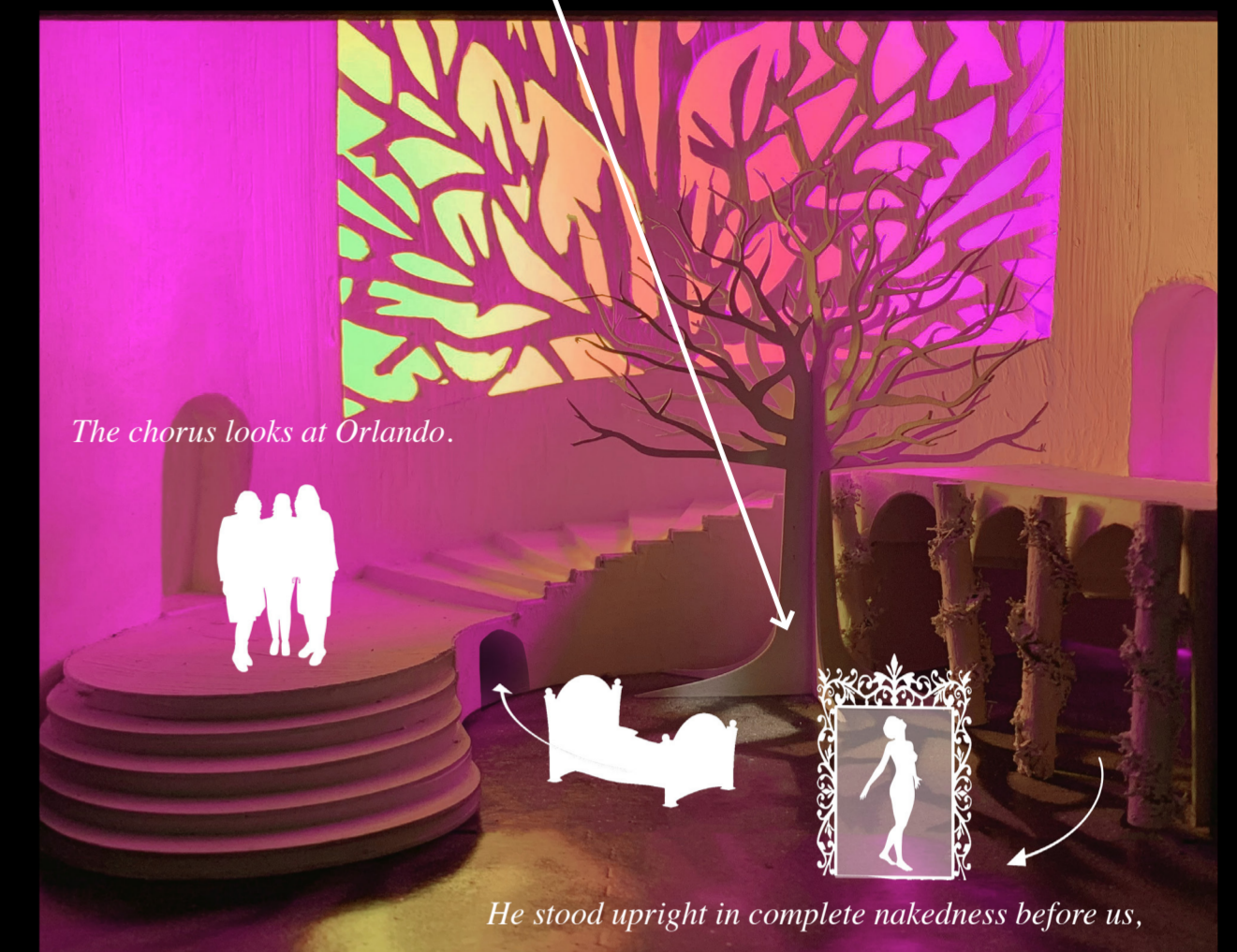
Long before midnight, Orlando was waiting.



Orlando stands in the darkness of the night and is only faintly lit by a dim light directed through the branches acting as a moon. He stands partly under the archways to avoid the rain as he waits for Sasha. In contrast, Sasha appears from the doorway on the floor above to communicate the power she has in this scene. She is brightly lit to attract the audience's attention as the main figure.

ACT II SCENE 2: CONSTANTINOPLE

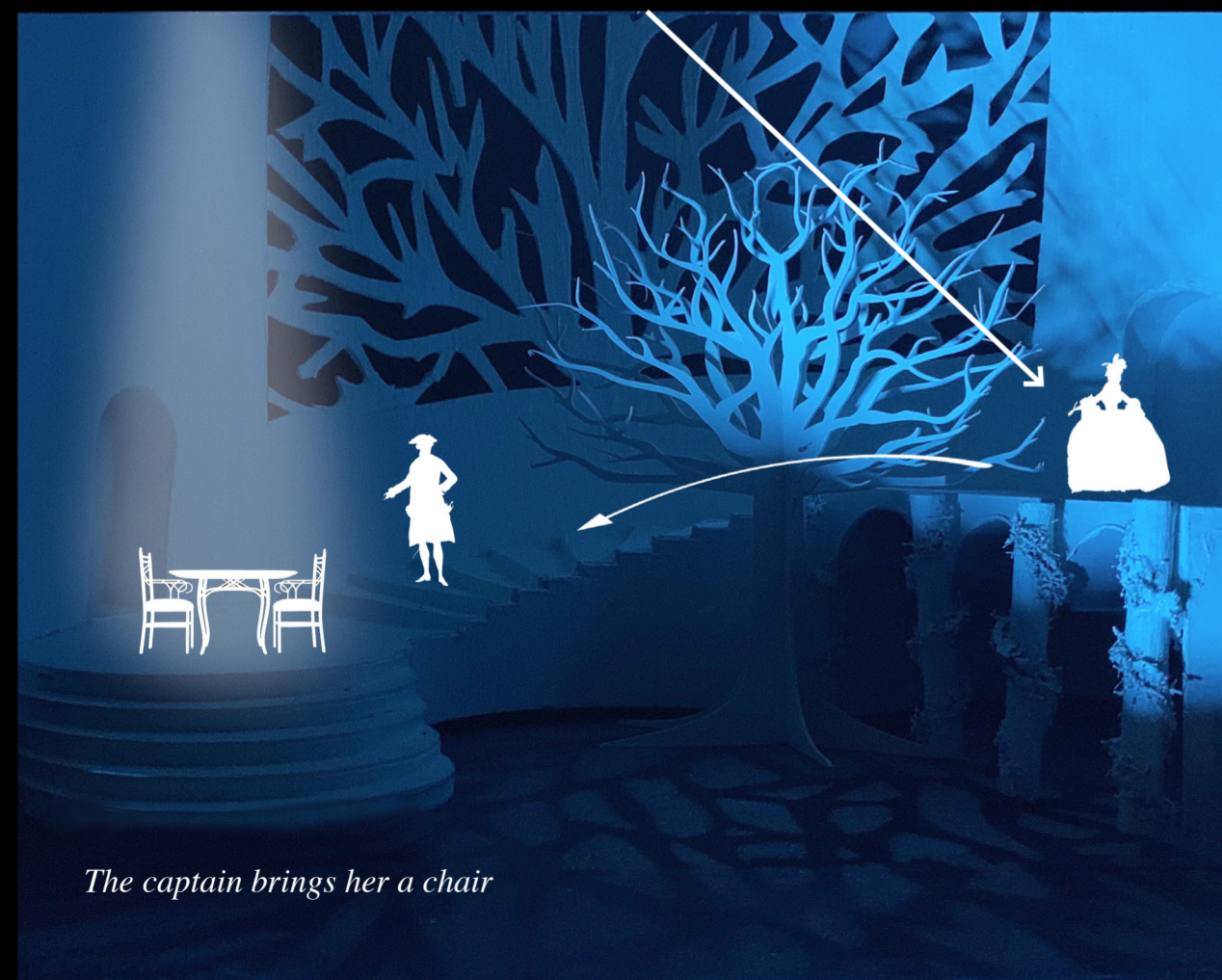
Orlando stretches, naked, behind the screen. We see "his" silhouette.



This scene is the great moment of transformation within the play as it is revealed that Orland has changed genders. The stage becomes full of colour and the sunrise shines from backstage. The screen is on wheels and brought out by the chorus before ascending the stairs. The bed which is also used in other scenes is on wheels and carefully hidden on the stage as part of the staircase.

ACT III SCENE 1: ORLANDO SAILS BACK TO ENGLAND.

Orlando appears on the deck of a ship



Orlando appears at the top of the staircase (acting as the deck of a ship) and makes her way down to the captain. He has gotten a table and chairs out from backstage. In this scene, the roots of the tree on the ground are projected upon and mimic the ripples of the ocean's water. The atmosphere of water is further achieved through the sound and music played during the scene.

ACT IV SCENE 1: ON THE PREPONDERANCE OF WEDDING RINGS

Wedding rings are dropped from the sky on strings.



This scene utilizes the fly in the theatre to drop down wedding rings on strings. The rings will be made out of reflective material so that they shine and reflect light towards the audience to enhance the feeling of the magical realism element of the design. The lighting of this scene is vibrant and pink, intensifying the romantic atmosphere as she meets and marries Marmaduke.

ACT V SCENE 1

Hundreds of little rooms are lit, one precisely the same as the other.



This image depicts the final moments from the final scene of the story. I envisioned that as the soundscape of modern sounds and reminiscent music score fade out with the lights, Orlando is the only figure on the stage after the chorus exits. The lights coming from behind the tree branches reflect the city that Orlando looks out to as she starts the next part of her journey.